



# SLS

DUBAI  
HOTEL & RESIDENCES

FACT SHEET & CROWN OF JEWELS



---

To create & curate a wunderkammer\* of varied & extraordinary moments that truly resonate with guests & define luxury hospitality in the 21st century.

\* *Wunderkammer: German, 1500s expression meaning "Wonder room".*

SLS is the home of an extraordinary experience, with a playful ambiance.

Culinary artistry, theatrical interiors, subversive design touches and unexpected indulgences. With leading developers, architects, designers & chefs, we're anticipating, innovating and shaping the future of luxury lifestyle living.





Located in the Downtown district, SLS Dubai offers incomparable 360-degree views over the city. Voted #3 Top Middle East Hotel of the Condé Nast Traveler's Reader's Choice Awards, SLS Dubai provides unobstructed views of the iconic Burj Khalifa, along with a clear overhead of the calming Dubai Creek.

The impressive 75 story tower makes SLS Dubai one of the tallest hotels and residences in the region. Developed in collaboration with international architecture firm Aedas, SLS Dubai comprises of 254 expertly designed hotel rooms, 321 hotel apartments and 371 residential units by acclaimed designer Paul Bishop and in true SLS fashion, features contemporary art, sleek accents & exceptional fittings that are unique characteristics of the brand's DNA.

VIEW FROM SLS DUBAI

A STONE'S THROW AWAY (IN MINUTES)

3 MINUTES: TO DUBAI MALL AND BURJ KHALIFA

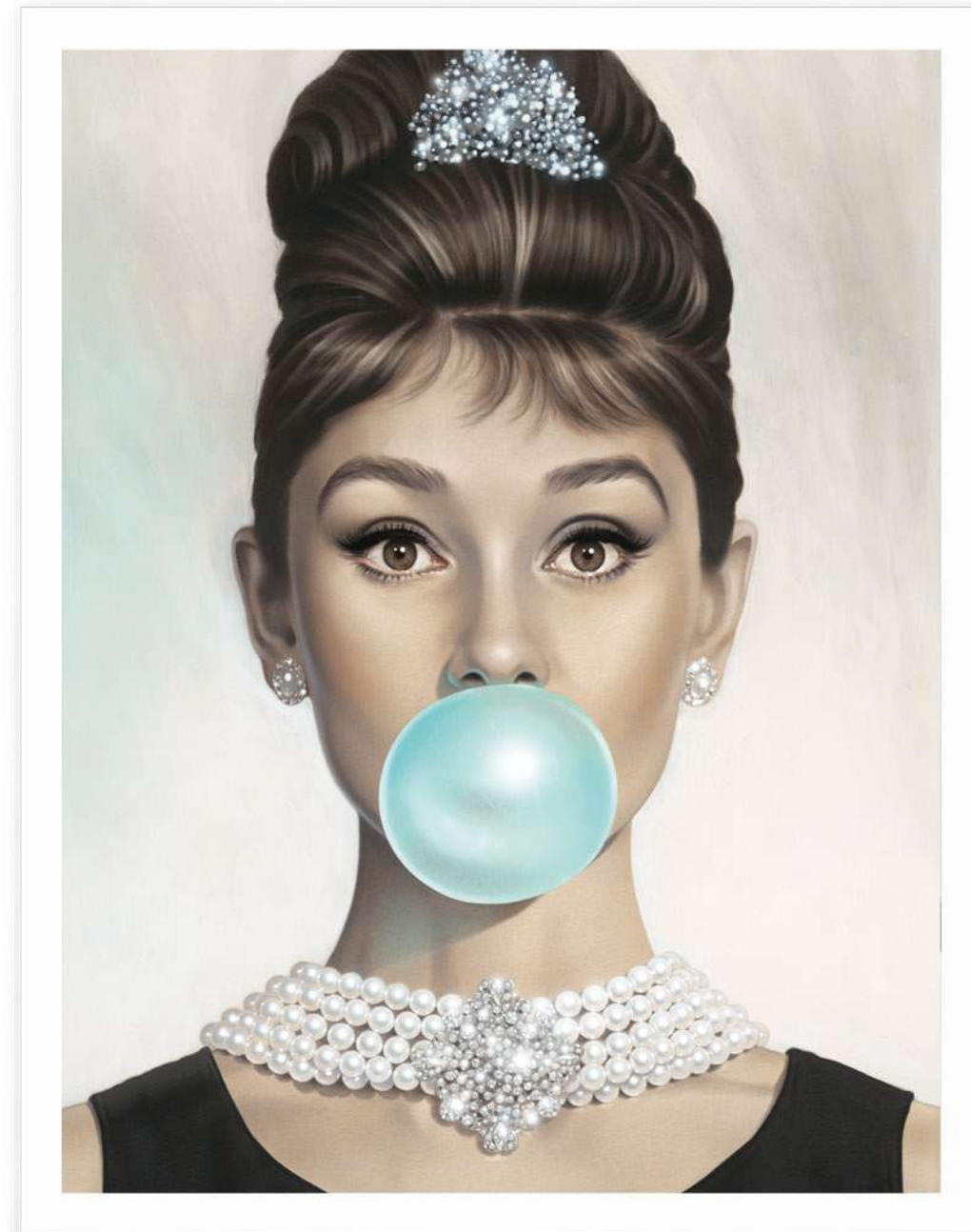
5 MINUTES: TO DUBAI DESIGN DISTRICT

7-10 MINUTES: TO DIFC

10 MINUTES: TO DUBAI INTERNATIONAL AIRPORT

15 MINUTES: TO BURJ AL ARAB JUMEIRAH



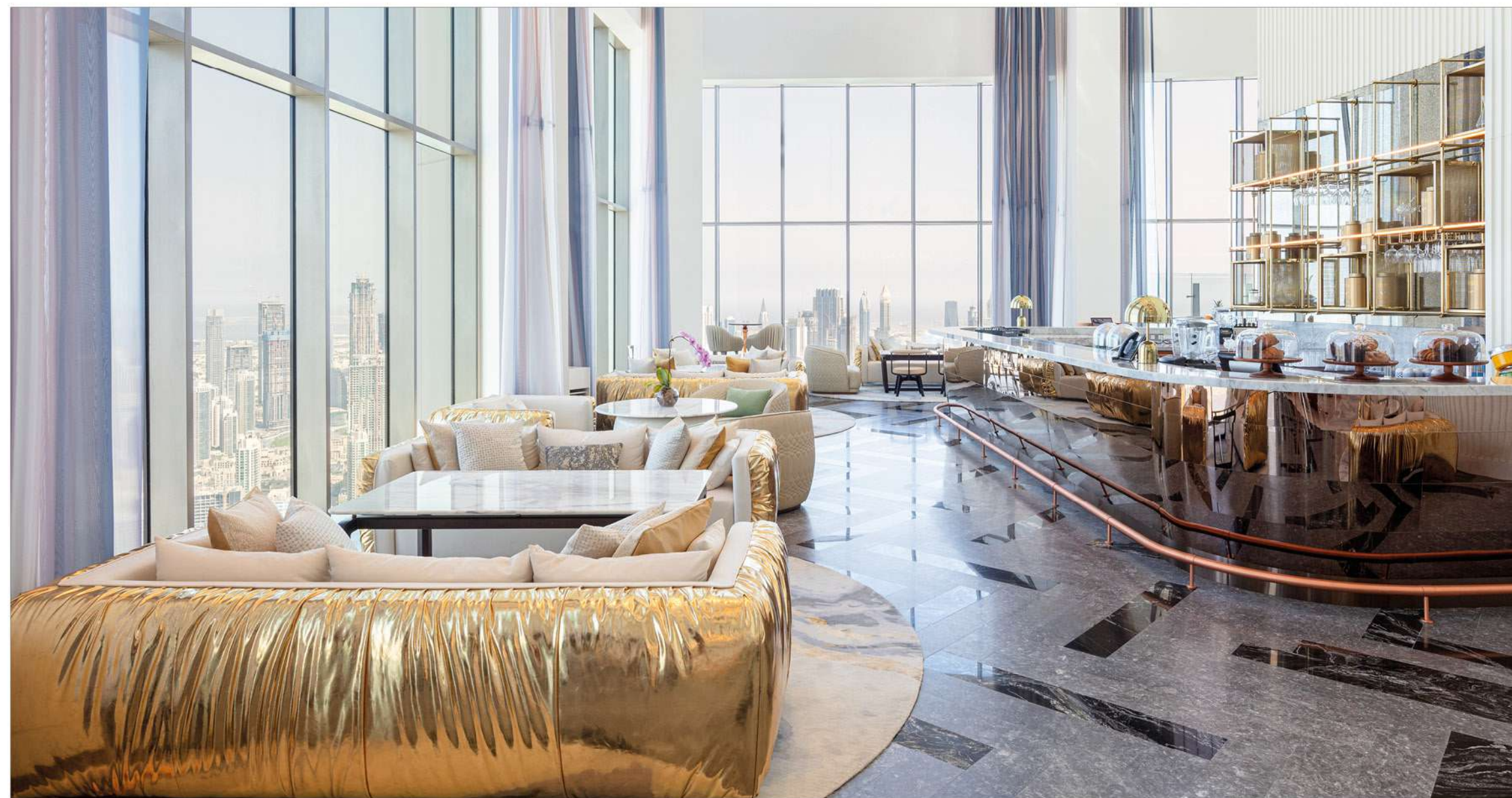


---

You'll be met with a large coloured, stained glass window, beautifully exhibiting the famous Latin quote of "Fortune Favours the Bold" – a saying that holds true to our daring approach to excellence. This historic artform of coloured glass windows captivates guests, architects and design lovers, alike.







---

Guests entering through the ground atrium take an express elevator to the opulent Sky Lobby, located on the 71st floor. Floor-to-ceiling windows surround a deluxe lounge and lobby bar, along with panoramic views of the city's bright skyline.







## Hotel

Spy on breathtaking scenery from the rooms' spacious terraces and balconies as you set your sights over Dubai Creek, or the twinkling lights of the Burj Khalifa and unobstructed views of the Downtown Dubai, come sunset or sunrise. Decorated in lilac and violet tones, with romantic accents of rose-gold motifs, the sublime layouts of the rooms, courtesy of award-winning architects Aedas and interior designer Paul Bishop, are the epitome of luxury living, with a playful twist.

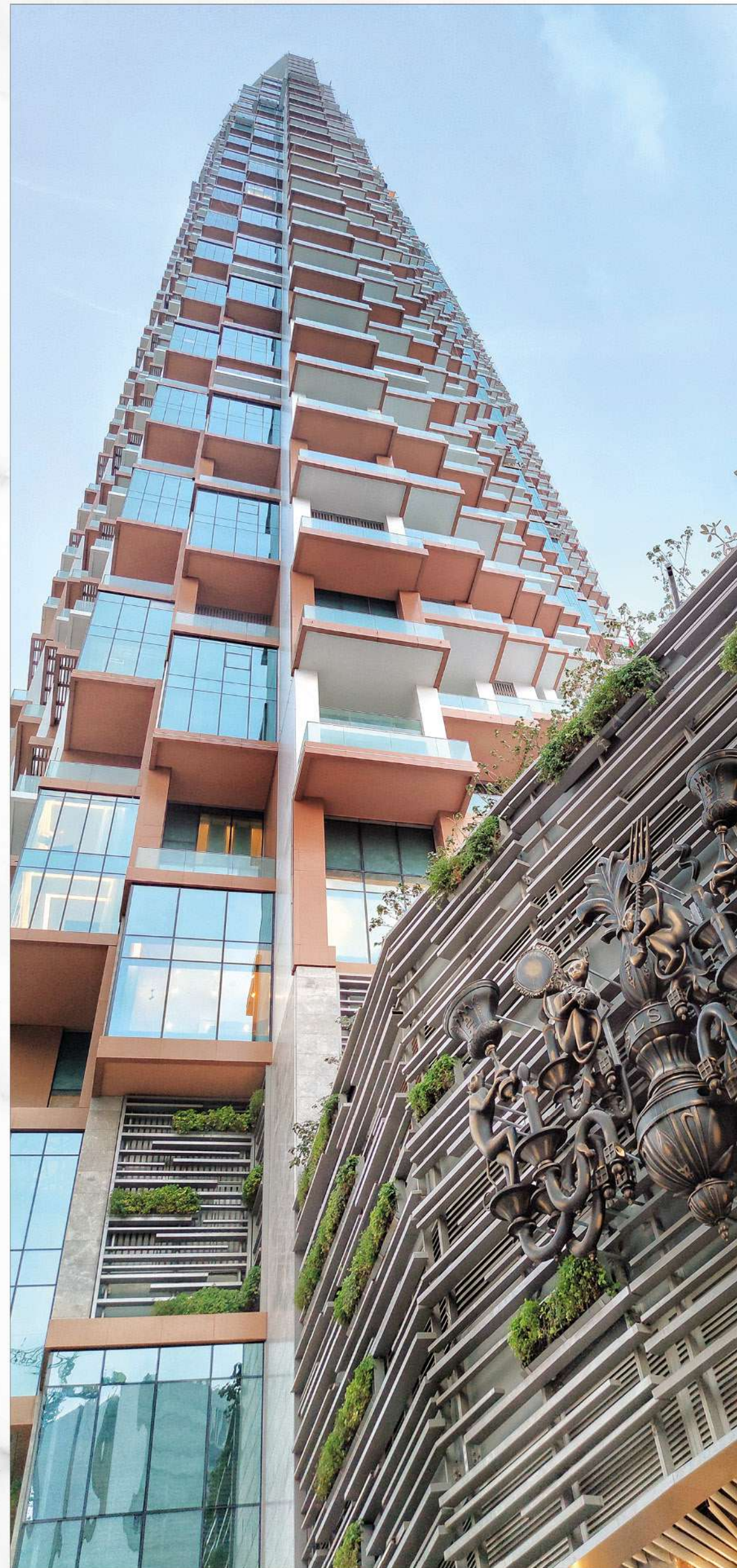
### *SLS Dubai Hotel*

- 169 Signature King with Balcony
- 39 Signature Duo Beds with Balcony
- 3 Signature Safe Duo Beds Accessible
- 10 Sky King with Balcony
- 20 Sky Premium with Balcony
- 10 Sky Family Suite with Balcony
- 2 Vanilla Sky Premium King Suite with Balcony
- 1 Presidential Suite

Total of 254 Hotel Rooms & Suites







## Hotel Apartments

Have access to ultimate exclusivity with SLS Hotel Apartments. Each apartment has a contemporary sophisticated feel, offering the finest in furnishings, materials and finishes. Marvel at breath-taking views of Downtown Dubai, Imm with quality services and the promise of additional privacy and discretion.

### *SLS Dubai Hotel Apartments*

- 68 Urban Living King Studio
- 8 Prime Living One Bedroom King
- 93 Inspired Living One bedroom King Loft
- 89 Cloud Living One Bedroom King Duplex
- 27 Wonder Living Two Bedroom King Duplex
- 16 Elite Living One Bedroom King
- 11 Grand Burj Living
- 9 Wonder Burj Living

Total of 321 Hotel Apartments







## Kitchen Fixture & Appliances:

- Custom made matte lacquered kitchen top and bottom cabinets
- Under counter built-in LED lighting
- German sink by Franke
- Italian sink mixer with spray flow by Gessi
- Spanish counter top by Krion
- Built-in natural oak veneered refrigerator and dishwasher doors
- Built-in dishwasher
- Built-in double door refrigerator with freezer
- Built-in electric cooker hobs
- Built-in oven
- Extract hood
- Washing machine with dryer by Electrolux

## Extra Features:

- Automatized curtains in loft apartments
- Powder room in every apartment except studio apartments
- Utility cabinet / storage room in each and every apartment
- Cloak cabinet in each apartment
- Semi-transparent feature separator provision in every studio apartment
- Smart climate control by Lutron
- High performance glazing system by Saint-Gobain
- Non-combustible solid aluminum façade cladding
- Entrance door with access card reader by Vingcard

## SLS Signature Features:

- Heightened over 3 meters ceilings in simplex & duplex floors and over 7 meters ceilings in all loft apartments
- Integrated ample living terraces with guaranteed privacy
- Unobstructed -180degree city views
- Fully soundproof indoor spaces
- German technology, aluminium façade and window system with floor to ceiling height, thermally insulated, perfect air & water tightness fully soundproof and fully fitted accessories by Schuco



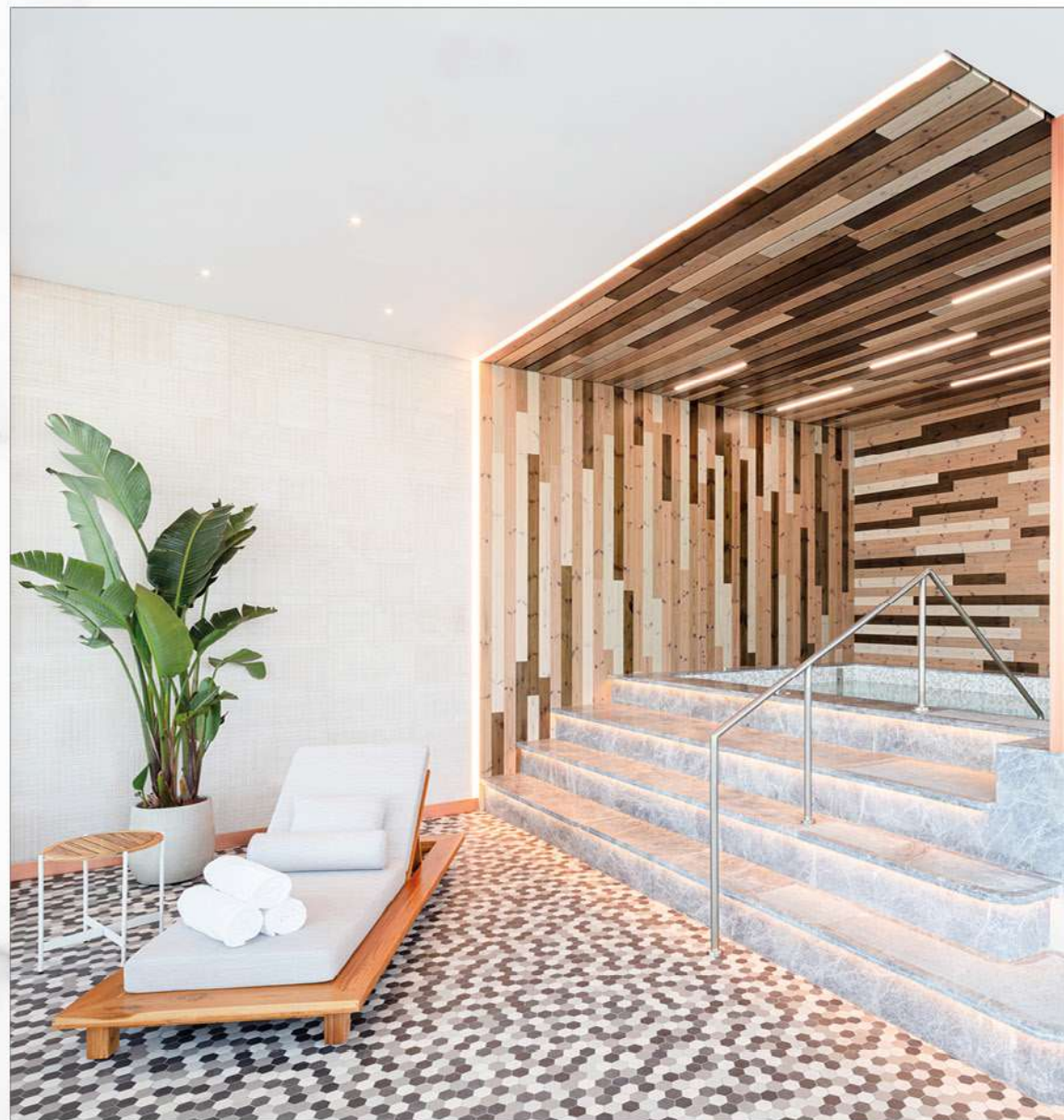


## Residential Features & Highlights:

- Flooring : Italian porcelain ceramic tiles by Lea
- In-room staircase: Bespoke floating design with built-in LED strip lighting within the handrail with natura timber steps
- Doors: Designed by Italian brand Lualdi
- Lighting: LED lighting and 'smart' controls by Lutron providing ambient lighting with built-in chandeliers. Lighting fixtures designed by FLOS
- Wardrobes: With timber doors and Germane hardware by Hafele, with built-in natural oak veneers
- Outdoor terrace: Aluminium doors equipped with German technology, three meters in height along with air and water tightness, fully soundproof, allowing easy life and slide opening mechanism by Schuco
- Restrooms: With smart and LED lighting controls, Italian porcelain ceramic tiles, featuring rainfall showers. Italian bathroom finishing, German sanity ware by Villeroy & Boch with stand-alone wash basins and wall-to-wall vanity mirror with built-in LED lighting.







### Design:

Decorated in lilac and violet tones, with romantic accents of rose-gold motifs, the sublime layouts of the rooms and apartments, courtesy of award-winning architects Aedas and interior designer Paul Bishop, are the epitome of luxury living, with a playful twist.

### Residential Amenities:

- Lap pool
- Leisure pool
- Kids' pool
- Jacuzzi
- Spa
- Vitamin Bar
- Fully equipped gym by Technogym
- Multipurpose room
- Dedicated lobby for residences





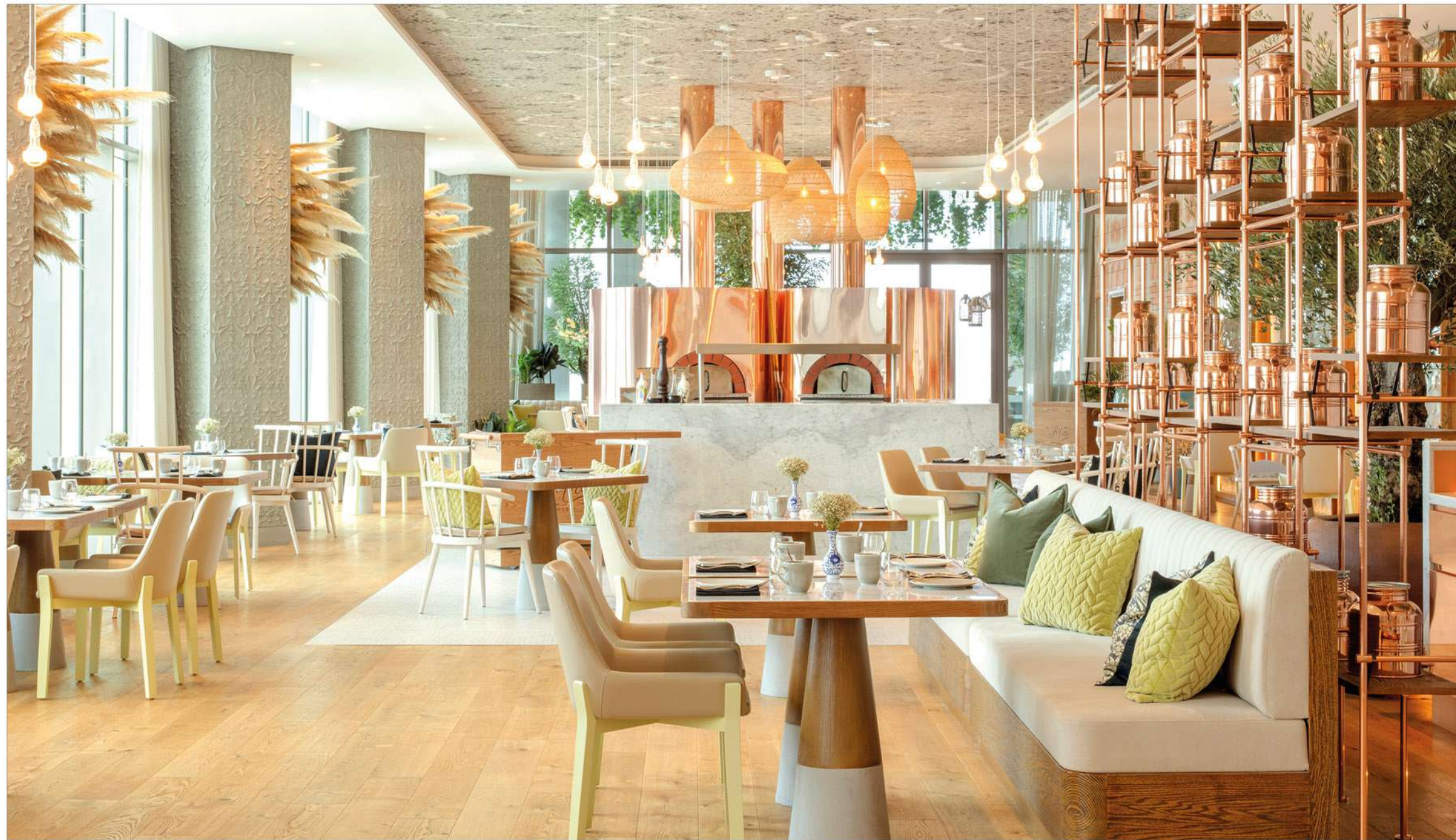
SLS

DUBAI  
HOTEL & RESIDENCES

CROWN  
JEWELS







*Fi'lia*

A Michelin Bib Gourmand award winning restaurant, Fi'lia is a daily destination offering local artisanal foods, handcrafted cocktails, and culturally immersive experiences unlike anything Dubai has ever seen before. Fi'lia celebrates a genuine approach to Italian cuisine with a hint of Mediterranean influence. Proud to be a female led restaurant in the region, Fi'lia highlights empowerment and equality. A 100% female produced wine list and a specialty cocktail menu with female led spirits are sure to evoke a story in every sip. Located at the 70th floor with an abundance of natural light and garden terrace for the perfect al fresco dining, complimented by breath-taking views of Burj Khalifa. Committed to sourcing the best ingredients, expect handmade pastas, craft pizzas, freshly baked breads and innovative vegetable driven dishes. Open for lunch, aperitivo and dinner, this is where creativity, craftsmanship, and community all share a seat at the table.

Total Seating Capacity: 204 guests



**carna**

**Temporarily closed. We are working on elevating the dining experience to new heights and will unveil a refreshed, contemporary look soon.**

Introducing Carna, a contemporary steakhouse concept helmed by the legendary Butcher, Dario Cecchini from the Chianti region of Tuscany, Italy. Located at the 74th floor, spend a leisurely evening with friends at the atmospheric large indoor space surrounded by panoramic views of Downtown Dubai. Carna offers dinner that combines your traditional steakhouse classics with a unique and experience driven culinary take. It features a bar, exclusive cutting-edge tasting room with Dubai's largest collection of Whiskey, table side service, private dining room, display of premium selection of cuts, and striking interiors that evokes a freeing sense of escape.

Total Seating Capacity: 252 guests





# privilege

The most jaw-dropping feature is found on SLS Dubai's rooftop, with its signature rooftop venue, Privilege, where two infinity pools are placed at the top of the 75 stories, with stunning views of the city, guaranteeing to be the most unrivalled sight-seeing spot in town. With signature cocktails, light fare and all the sun to soak, Privilege is the spot to be for sky-high dippers looking to make a splash.

Pool Deck Total Seating Capacity: 201 guests  
Night Club Total Seating Capacity: 77 guests



# Smoke & Mirrors

Disrupting the ordinary, the stylish SLS Dubai is holding onto the best kept secret in town, a venue where everything is not as it seems. A smooth and sultry lounge, Smoke and Mirrors is set to become the most sought-after and best-kept secret in Dubai after making the journey from its first location in Mondrian Doha. An intriguing blend of mystery, style, divine food and great music await at Smoke and Mirrors – where the best things happen behind closed doors.

Total Seating Capacity: 55 guests





## ELLAMIA

A sense of cute with its crisp, white interiors, EllaMia is the perfect spot to enter a mid-day daydream with a cup of coffee. Located on the ground floor, EllaMia is all about serving good old-fashioned caffeine, with the aroma of your favourite morning brew, along with a side of house made and freshly baked sweets from macarons, cakes and pudding. EllaMia brings the extra-cosy, vibrant setting that will have any java-savvy lover buzz in delight.

**Seating Capacity: 36 guests**



## S BAR

S Bar takes lounge life to new heights. The vibe is casual and the style is bohemian chic with an urban edge. Offering an eclectic and evolving musical experience, innovative cocktails, and a tempting array of lite bites, S Bar is the perfect place to meet up with friends any day of the week for an intimate tête-à-tête or an all night party at the outdoor terrace to watch the sun set and the stars light up. S Bar Dubai plays on everyone's two true sides-Saints & Sinners. A menu split into two, the light, refreshing, healthy conscious, playful side and the sassy, gluttonous, full of temptation on the other.

**Total Seating Capacity: 92 guests**







# CIEL

SPA  
SLS DUBAI

SLS Dubai also includes the brand's signature spa concept, Ciel Spa, the epitome of luxury with 7 treatment rooms, dedicated male and female thermal areas that contain steam rooms, experience showers, plunge pools and relaxation rooms, as well as a full-service grooming salon, a fully equipped gym and two outdoor terraces.







Setting the stage for you for every and any occasion, from corporate to social events. SLS Dubai's dedicated catering and conference services team, always value attention to detail, ensuring that every type of event is perfectly completed, from start to end.

There are a total of 6 meeting and ballrooms, with over 260 square meters of space, that can accommodate a range of numbered guests, from 10 to 200.







The Crest is the crown jewel in the SLS identity. A baroque chandelier holding four roguish capuchin monkeys. More than any other symbol, this surprising mix of elegance and subversion encapsulates the unique flavour of the brand.





---

The rubber duck – imagined. SLS Dubai is home to the SLS duck, bringing the brand's multicolour and playful spirit to life. Wouldn't you want to be chilling poolside with the SLS iconic figure?







SLS  
DUBAI  
HOTEL & RESIDENCES

@sbsdubai   @filiadubai   @sbardubai   @carnadubai  
@privilegedubai   @ellamiadubai   @cielspadubai









